

42 ft 2018 Lagoon 42, I'M GONE

US\$489,000

Ft. Pierce, Florida, United States



**JUST  
CATAMARANS**



### Boat Details

Make:	<b>Lagoon</b>	Class:	<b>Catamaran</b>	Cabins:	<b>3</b>
Model:	<b>42</b>	Hull Material:	<b>Fiberglass</b>	Berths:	<b>3</b>
Year:	<b>2018</b>	Drive Type:	<b>Sail Drive</b>	Heads:	<b>3</b>
Length:	<b>42 ft</b>	Beam:	<b>25 ft 3 in</b>	Fuel Type:	<b>Diesel</b>
Price:	<b>US\$489,000</b>	Boat Location:	<b>Ft. Pierce, Florida, United States</b>	Max Speed:	<b>12 kn</b>
Condition:	<b>Used</b>	Name:	<b>I'M GONE</b>	Max Draft:	<b>4 ft 1 in</b>

**Just Catamarans | Just Catamarans, Inc**

Harbour Towne Marina, Dania Beach, Florida, United States

Tel: (954) 589-2343 Fax: (954) 589-0867

sales@justcatamarans.net

https://justcatamarans.net/



## Description

NEW TO THE MARKET

2018 LAGOON 42 OWNERS VERSION

I'M GONE is a well-maintained catamaran that was mostly used by her owner.

She was lightly chartered in Key West for a short period of time.

Gel batteries

57 hp Yanmar engines

Inverter

Onan Genset

Electric toilets

Air conditioning

Fusion stereo system

## Information & Features

### 2018 Yanmar 4JH57 (Engine 1)

Type:	<b>Inboard</b>	Drive Type:	<b>Sail Drive</b>
Fuel Type:	<b>Diesel</b>	Power:	<b>57 hp</b>
Hours:	<b>3290</b>		

### 2018 Yanmar 4JH57 (Engine 2)

Type:	<b>Inboard</b>	Power:	<b>57 hp</b>
Fuel Type:	<b>Diesel</b>		
Hours:	<b>3290</b>		

### Dimensions

LOA:	<b>42 ft</b>	Max Draft:	<b>4 ft 1 in</b>
Beam:	<b>25 ft 3 in</b>		
Max Bridge Clearance:	<b>67 ft 9 in</b>		

### Weights

Dry Weight: **26,681 lb**

### Speed

Cruising Speed:	<b>8 kn</b>
Max Speed:	<b>12 kn</b>
Range:	<b>695 nmi</b>

### Seating

Seating Capacity: **10**

## Tanks

Fuel: **2 x 79 gal**  
Fresh Water: **1 x 79 gal**  
Holding: **2 x 40 gal**

## Accommodations

Single Berths: **3**  
Cabins: **3**  
Heads: **3**

## Other

Hull Shape: **Catamaran**  
Flag Of Registry: **United States**  
Designer: **Patrick Le Quement**

## Recent maintenance

- Recent maintenance completed:
- Seal and service of both sail drives
- Tension check of standing rigging ( fully inspected in June 2022)
- Inspection of running rigging, new primary reefing line
- Both electric winches at helm station inspected, cleaned and greased
- Bottom and sail drives sanded, and repainted

## Electronics

- Depthsounder
- Radar
- Log-Speedometer
- Wind Speed and Direction
- Navigation Center
- Plotter
- Autopilot
- Compass
- CD Player
- GPS
- Cockpit Speakers
- VHF

## Sails

- Fully Battened Mainsail
- Gennaker/Cruising Spinnaker
- Furling Genoa
- Asymmetrical spinnaker
- Colligo continuous Roller Furler - 2021 UK Code Zero

## Inside Equipment

- Air conditioning
- Electric Bilge Pump
- Oven
- Manual Bilge Pump
- Electric Head
- Heating
- Refrigerator
- Deep Freezer

## Outside Equipment

- Cockpit Shower
- Outboard Engine Brackets
- Davit(s)
- Tender
- Solar Panel
- Cockpit Cushions
- Cockpit Table
- Covers
- Lazy Bag
- Lazyjacks

## Electical

- Shore Power Inlet
- Inverter

## Manufactures description

A SLEEK, MODERN DESIGN - This new member of the Lagoon family has style and a strong personality. While keeping a family resemblance and retaining the main features of the latest generation of Lagoons, it shows us a new path: unhurried evolution, a new "organic" approach, in search of harmony between living space and man. An elegant silhouette, flowing curves which, by virtue of a noticeable acceleration of the lines in the bows and in the new coachroof design, emphasize the powerful and dynamic nature of this new model? A VPLP design naturally, a guarantee of performance under sail!

A COZY COCKPIT, WITH SMOOTH, ELEGANT CURVES - a single level from the aft platform to the saloon: a structural "revolution" entirely new ergonomics that ensure excellent use of space and ease of circulation on board, a large glazed door that occupies the entire width of the coachroof, and provides access to the unparalleled internal volumes.- The suspended steps at the transom provide a whole new perception of the boat: a continuous, wide and inviting platform, worthy of a large vessel.

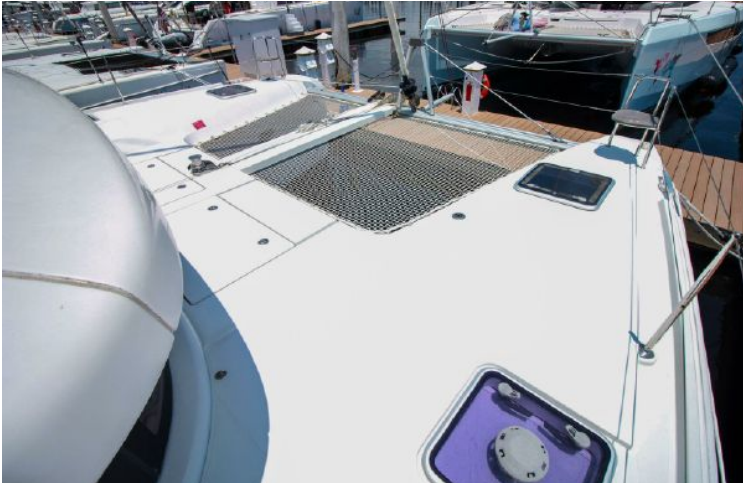
AN INGENIOUS DECK LAYOUT - The mast moved further aft and the self-tacking jib, a guarantee of performance under sail and ease of handling, provide the ability to bring all operations together in one place.

AN ERGONOMIC HELMING STATION - At the coachroof bulkhead, offering many advantages: direct communication between the cockpit and saloon, improved circulation, forward and aft of the helming station, direct access to the coachroof for easier access to the boom, a composite bimini top with a sliding panel to ensure a good view of the sails, a closure panel or helming station safety when under way.

ACCOMMODATIONS - Three double cabins ? and what cabins! Island double beds for the aft cabins and beds with side access for the forward cabins, the aft cabins benefit from a bathroom with a separate shower, very large windows in the cabins offer excellent illumination and magnificent views of the surroundings, the vertical glazing in the coachroof provides saloon illumination: a well-lit, comfortable environment that is perfectly balanced between the galley and saloon areas, the U-shaped galley, fully fitted with broad work surfaces and extensive storage space, is oriented towards the external cockpit. The attention devoted to detail and the use of the volumes make this new interior a unique and enjoyable living space.

## Disclaimer

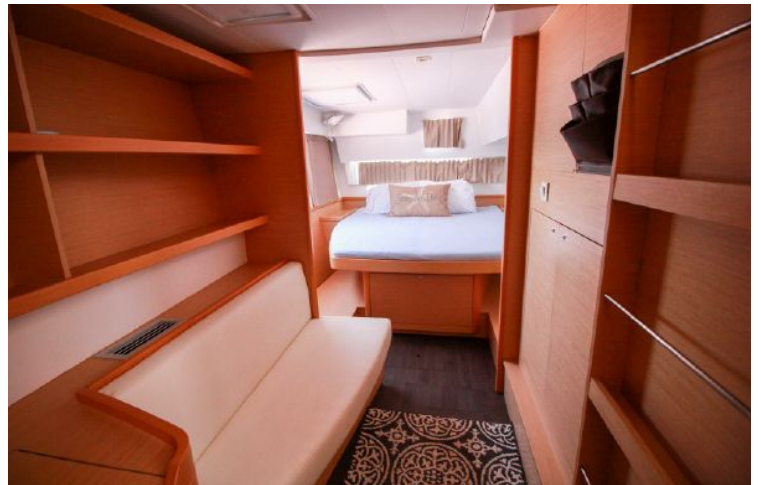
The Company offers the details of this vessel in good faith but cannot guarantee or warrant the accuracy of this information nor warrant the condition of the vessel. A buyer should instruct his agents, or his surveyors, to investigate such details as the buyer desires validated. This vessel is offered subject to prior sale, price change, or withdrawal without notice.

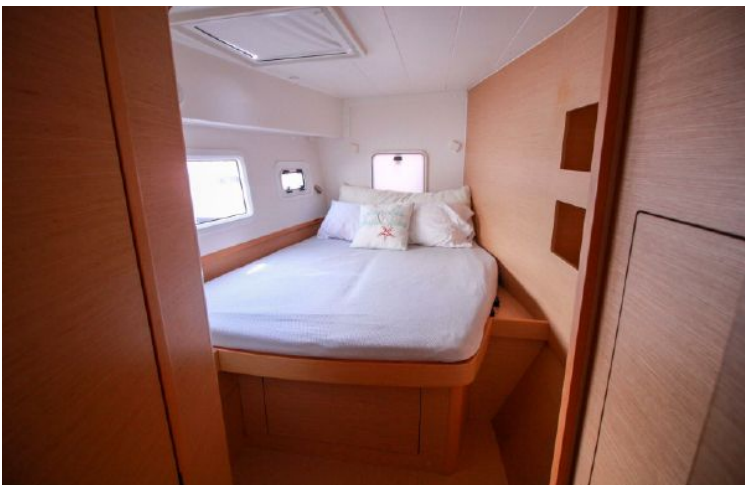






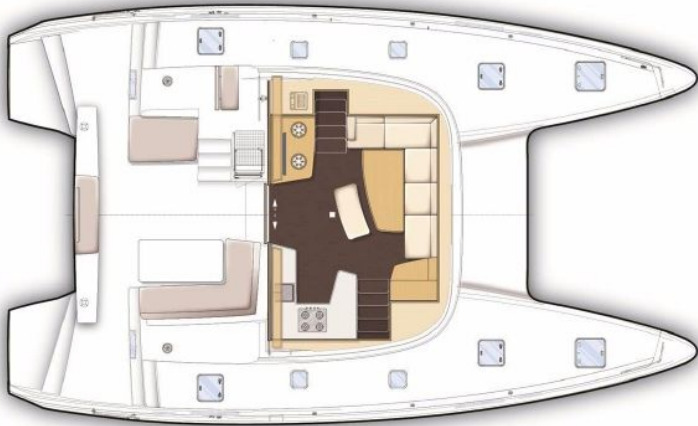








Version 2 cabine / 2 cabin urseins



Deck / Saloon