

# OR

OCEAN + RENEGADE

UNPARALLELED PERFORMANCE & LUXURY

UNPARALLELED  
PERFORMANCE  
& LUXURY

OCEAN RENEGADE  
R6 SAIL



[info@oceanrenegade.com](mailto:info@oceanrenegade.com)  
[www.oceanrenegade.com](http://www.oceanrenegade.com)

An unrivalled approach to  
performance sailing

# ABOUT US +

---

Nestled in the picturesque city of Cape Town, Ocean Renegade, along with its sister companies, has been actively involved in the commercial marine industry since 2005 and embarked on the journey of yacht building in 2014.

At Ocean Renegade, we are proud to have established strong and strategic relationships with renowned construction and equipment suppliers worldwide. Our team of dedicated professionals possesses a wealth of experience in overseeing the design and construction of our yachts, with some members having honed their expertise at esteemed shipyards across the globe.

Having had the privilege of personally owning, living aboard, and crossing oceans on various catamarans, we have developed an insatiable passion for designing, developing, and crafting the ultimate cruising catamaran. Naturally, the definition of 'ultimate' may vary among individuals, and our interpretation may differ from others. However, we are confident that a meticulous examination of the R-Series, coupled with an understanding of our approach and philosophy, will resonate with true adventurers who seek the pinnacle of sailing excellence.



# DESIGN+

**Introducing the remarkable R6** - the natural evolution of the beloved R5, meticulously designed based on valuable feedback from our cherished clients and visitors. With the desire for a larger platform in the R-series, the R6 emerges as a unique and distinctive vessel, while still drawing inspiration from its predecessor.

Our goal was to create a 60-footer that embodies the R5's renowned ease of handling and outstanding performance, yet surpasses expectations with increased hull volume and generously-sized forward and aft cockpits. Countless hours of careful consideration and exploration of various layouts have led us to a perfect harmony of adaptability, seamless flow, and a comfortable living experience.

The R6 stands as a testament to our commitment to meeting the desires of our discerning customers while delivering a yacht that offers unrivaled versatility and an unparalleled sense of ease in every aspect of your journey.



## FEATURES

- 3/4 cabin layout with optional multifunction office
- New hulls
- Improved FWD cockpit design for ease of operation.
- Additional carbon reinforcements through out
- Panoramic saloon and cockpits
- Updated luxury finishes
- Improved carrying capacity
- Improved performance capabilities
- CE Certification

- Vacuum infused epoxy e-glass shell construction, sandwiched between high-density core
- Full carbon – main bulkheads
- Gurit structural PVC/corecell core throughout
- Sicom Green epoxy resin systems
- Full post-cure on completed shell
- Alexseal primers and topcoats
- Carbon Daggerboards
- Reverse Bows



# DESIGN+

**Experience the R6, where elevated luxury and convenience meet groundbreaking advancements.** One of the standout features of this remarkable yacht is its increased hull volume, allowing for an extra touch of opulence and practicality. Building upon its impressive array of creature comforts, we have taken it a step further by introducing additional finishing trims and enhanced spaciousness.

However, our commitment to innovation goes beyond aesthetics. We have revolutionized the engineering of the R6, embracing cutting-edge technology to create a vessel that redefines excellence. As a standard feature, the entire platform now boasts full carbon construction for all full-width bulkheads. This ensures optimal weight distribution and structural integrity, delivering an unparalleled level of performance.

Through a meticulous vacuum infusion process, each component of the R6 is crafted to perfection, pushing the boundaries of what is possible. This yacht is not just a vessel; it is a masterpiece that seamlessly combines offshore performance with modern living. Prepare to embark on a journey where form and function harmoniously coexist, setting new standards in the world of yachting. Discover limitless possibilities with the extraordinary R6.



## FEATURES

Length Overall	18.9m	62.0ft	Climma 48 000BTU Chiller Unit
Beam Overall	8.4m	27.6ft	4 x Climma EV fancoils
LWL Waterline	18.2m	60.0ft	Schenker Digital water maker
Draft	1.7m	4.9ft	Folding transom and davit system
Draft Daggerboards Down	3.2m	10.4ft	Transome hot & cold Shower
Bridgedeck Clearance	1.1m	3.6ft	40l electric Isotemp water heater
Light Displacement	14mt	30 864mt	6 x electric Whale bilge Pumps
Water Capacity	415L	109.6gal	2 x manual Whale Bilge Pump
Fuel Capacity	320L	84.5gal	1 x Whale double stack freshwater pump
			1 x Salt water washdown pump
			3x Tecma Silence Plus 2G electric toilets



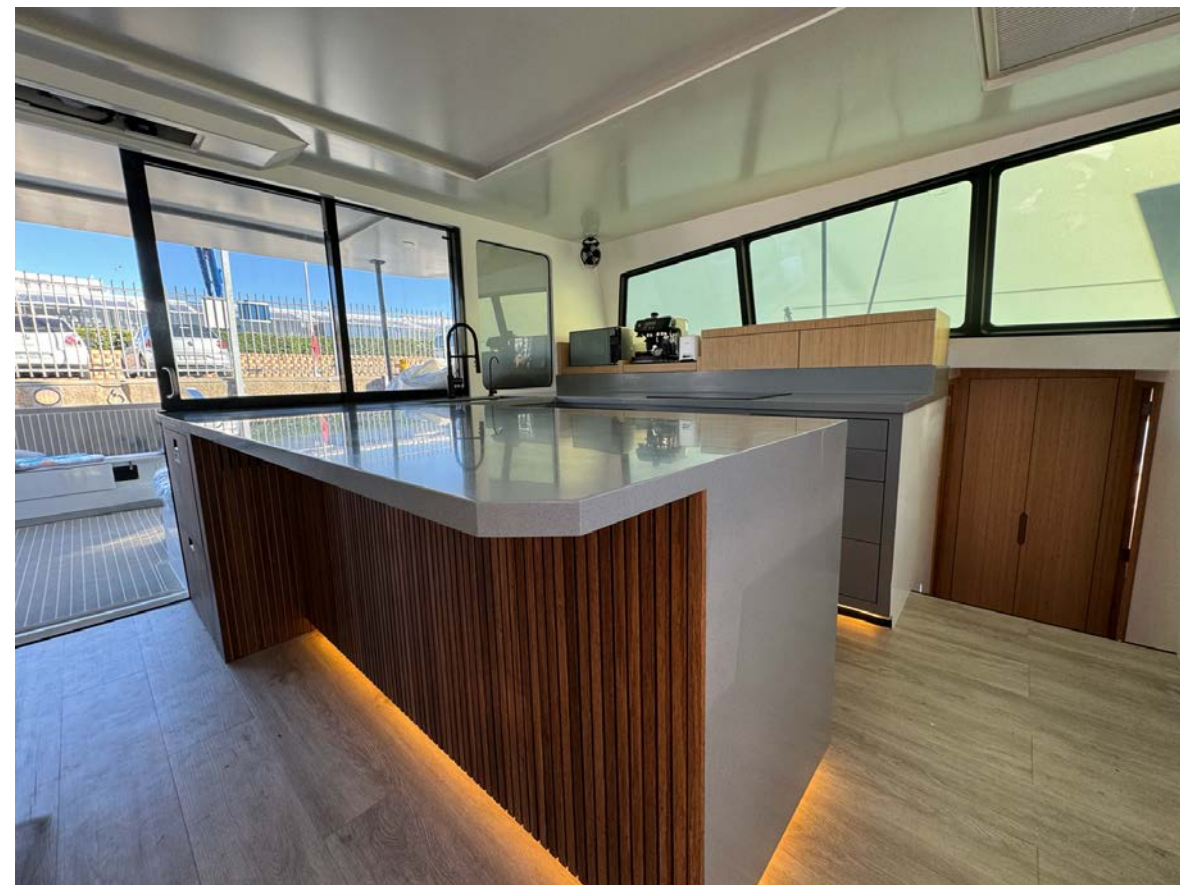
# LIVING+

*The R6 redefines versatility within its range, offering semi-customizable layouts to cater to diverse needs.*

Step into the stylish saloon, where elegance meets functionality. The well-designed space features a spacious corian and bamboo galley, complete with ample storage for all your culinary needs. Experience the joy of cooking with a 4-zone induction cooktop paired with an electric oven, while a dual sink, microwave, and dedicated appliance storage add convenience.

Gather around the galley table with its bar seating for 4, where you can enjoy meals while taking in panoramic views of the surrounding beauty. For entertainment, a rear bulkhead mounted popup 40-inch television provides entertainment at your fingertips. The ingenuity doesn't end there. The saloon table transforms into a full-size queen bed, perfect for accommodating overflow guests, creating a cozy kids' area, or serving as a comfortable spot for long voyage navigations.

Enhancing the ambiance of the saloon, two large sunroofs allow natural light to flood in, offering excellent visibility of the majestic mast and sails. Discover a yacht that combines practicality, comfort, and sophistication, making the R6 the perfect choice for a wide range of seafaring adventures.



## FEATURES

Folding multifunction office that doubles as full queen size bunk.  
Convertible saloon table into king size bunk  
Miele induction cooktop  
Miele Electric Oven  
Miele microwave  
Nespresso coffee machine  
Flexiteek and vinyl flooring options

Large custom fordeck and sail locker hatches  
Cockpit seating and dining for 8 guests  
Lightweight bamboo and core sandwich cabinetry  
Full Showers  
Full bathrooms  
Hansgrohe Taps and Showers  
Bamboo storage facilities and vanities throughout

IT TAKES TIME AND EFFORT  
TO KEEP HER LIGHT, BUT  
SHE IS WORTH IT

# LIVING+



Step into the cockpit of the R6, where comfort and versatility await. This well-designed space offers seating for 8, and with its adaptable configuration, it can be easily transformed into a spacious day bed, perfect for relaxation under the sun.

When at anchor, the transom cleverly folds flat, enhancing visibility and improving functionality and access throughout the boat. Inside, every guest bedroom is a haven of tranquility. Discreet lighting, reading lights, air conditioning, and USB charging stations ensure a pleasant and convenient stay. Choose from various layout options, including multifunctional office/bunks, catering to nomadic lifestyles and diverse preferences.

With three bedrooms featuring en-suite bathrooms, your comfort is our priority. Stylish countertops with integrated sinks add a touch of sophistication to the accommodation. To provide ample ventilation and natural light, each hull boasts four portlights, complemented by an additional escape hatch in the forward showers. This careful design promotes a fresh and airy atmosphere throughout the yacht.

For even more comfort, flush-mounted hatches in each cabin, including the showers, come equipped with flyscreens and blackout shades. This attention to detail ensures that your experience on the R6 is truly exceptional, combining luxury, functionality, and thoughtful amenities for the perfect yacht getaway.



## FEATURES

- 6 x Lewmar flush mounted hatches with Ocean air blinds
- 2 x Goyot Escape hatches.
- 1 x Goyot FWD cockpit door
- 1 x Goyot FWD opening window.
- 2 x Webasto Manual Sunroof
- 8 x Lewmar port hatches
- 4 x Lewmar Flush mounted hatches with flexiteek covers for engine room and Sugar-scoop storage

- Large, toughened glass sliding doors and galley windows.
- Toughened glass saloon windows
- Acrylic hull windows
- Durable and comfy saloon and cockpit upholstery
- Large galley with panoramic views
- Counter seating for 4 people
- Dual zone vertifigo fridge/freezer
- Corian Galley countertops, bathroom countertops and corian sinks



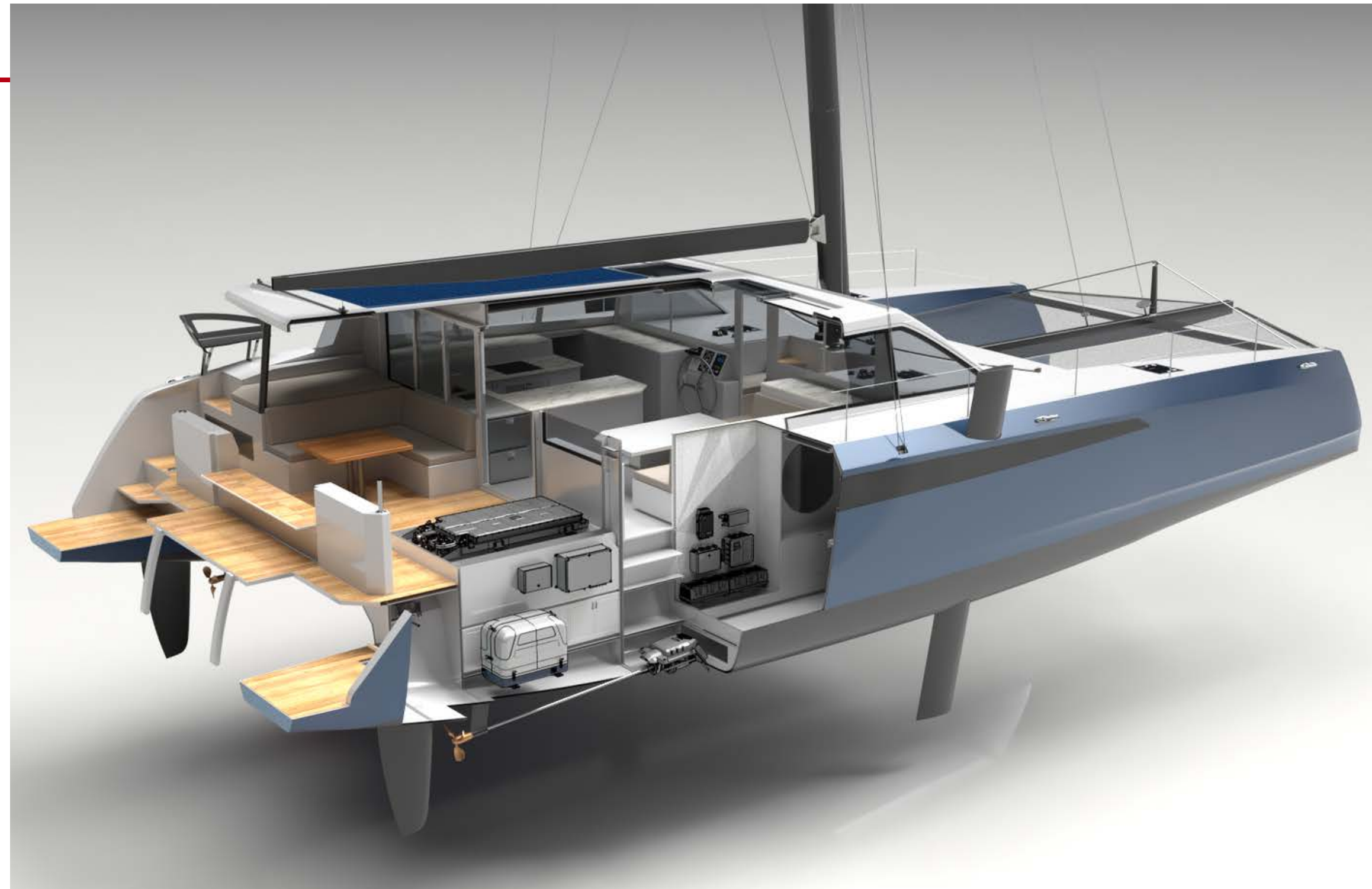
# TECHNOLOGY+

Embracing innovation and sustainability, the R6 version sets new standards with the inclusion of the powerful Torqeedo deep blue propulsion system as standard. This showcase of our dedication to electric propulsion ensures a cleaner and more efficient journey. However, recognizing the preferences of our valued customers, we also offer a traditional diesel option for those who prefer it.

To elevate your sailing experience, we proudly introduce the 'sail by wire' package, a game-changer in steering systems. Enhancing the already exceptional steering system, this package incorporates two additional outboard seated tiller steering positions, allowing for effortless maneuvering. With remote control functionality for the traveller line driver and trimming winches, you can now enjoy a fully immersive and enjoyable sailing experience with just one hand.

The R6 is equipped with a comprehensive B&G instrumentation package, providing you with all the essential data and insights for your sailing adventures. In addition, the CZONE digital switching and monitoring system ensures seamless control and monitoring of various onboard systems, simplifying your yacht's operation and enhancing your peace of mind.

With a relentless commitment to innovation and cutting-edge technology, the R6 version offers a yacht experience like no other, where sustainability, convenience, and enhanced sailing capabilities come together in perfect harmony.



## FEATURES

2x Torqeedo electric engine	BD25i 1400	27.6kW
BMW High voltage battery	354v	40kWh
2x Torqeedo high perf battery	24v	3679Wh
Fisher Pander DC generator	20kW	20kW
Water-cooled inverter	6kW	6kW
Bi-directional DC/DC converter	24vDC	24vDC
Deep blue touch display	7inch	17.78cm
3 x shore power charger	3.3kW	3.3kW

- 2x Torqeedo system management units
- Twin top throttle
- All Torqeedo management software
- Cooling kits and circuits
- Suspension Kits
- Ventilation kits
- Generator interfaces
- Deep blue router and remote connectivity

- B&G electronics
- 16 multifunction chartplotter
- 1 x 4.1 inch multifunction triton display Helm
- 1 x 4.1 inch multifunction triton display Mast
- 1 x 4.1 inch multifunction triton pilot Mast
- Halo20+Radar
- Forwardscan
- AIS
- VHF

- CZONE digital switching
- Digital/analogue connectors
- Dedicated 7inch control display
- CZONE network interfaces
- CZONE wireless interfaces
- NMEA backbone and connectors
- Monitoring and remote management



# PERFORMANCE+



The development of the R6 series was rooted in our unwavering commitment to prioritize performance while upholding our core values. Building upon the successful foundation of the R5, we integrated all its exceptional features and further enhanced them in the R6. This harmonious combination of upgrades sets a new standard in yacht construction, reigniting the passion and allure that drew us to this extraordinary lifestyle in the first place.

The R series embraces the essence of blue water cruising, effortlessly traversing vast distances without straining any of its components. This not only ensures longevity but also grants peace of mind as you sail, day after day, consuming miles with ease. However, it's worth noting that this series readily responds to a desire for more exhilarating sailing experiences. With a touch of fine-tuning and a steady hand, the R6 can keep you entertained for countless miles, offering an enjoyment factor that most can only dream of.

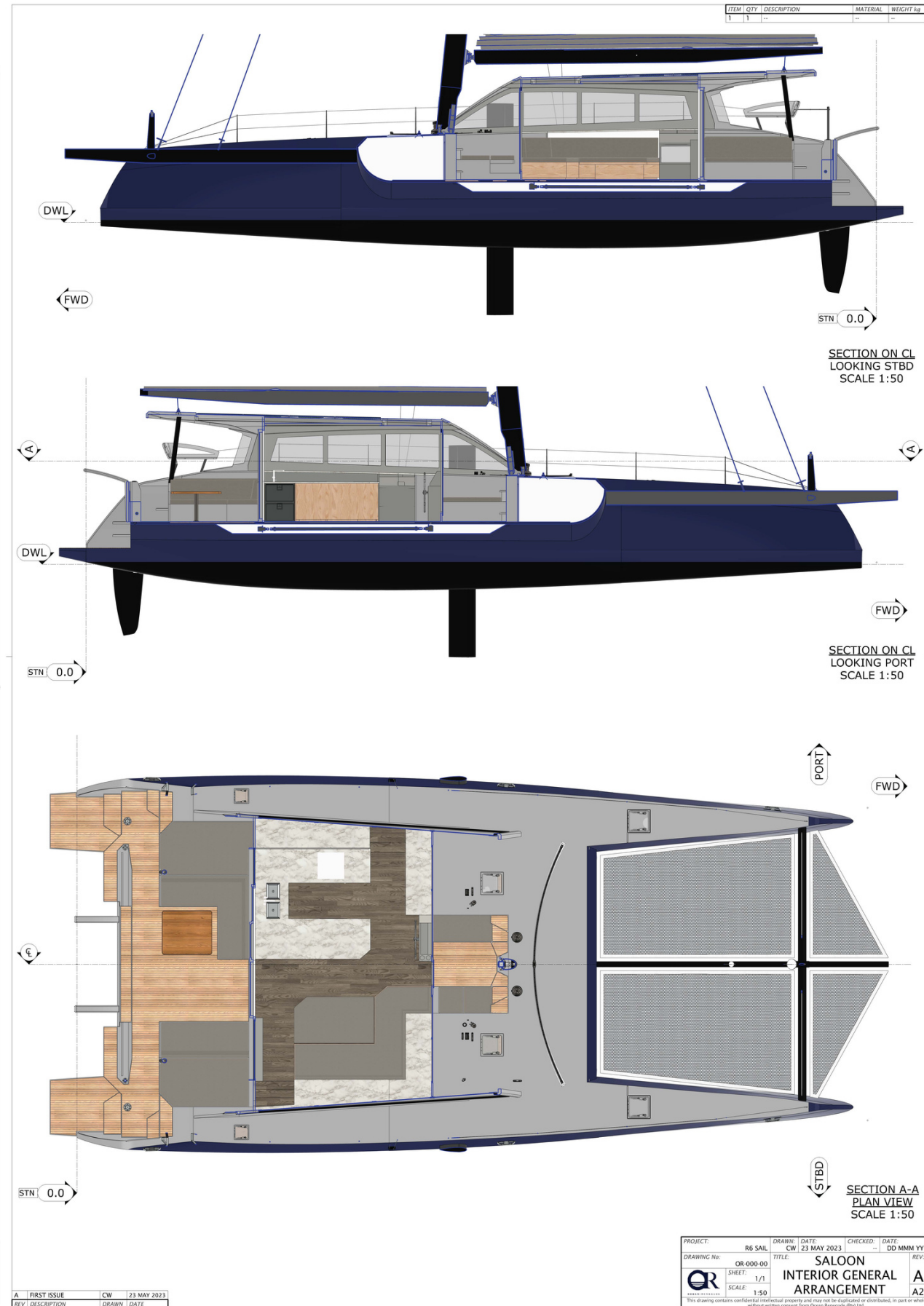
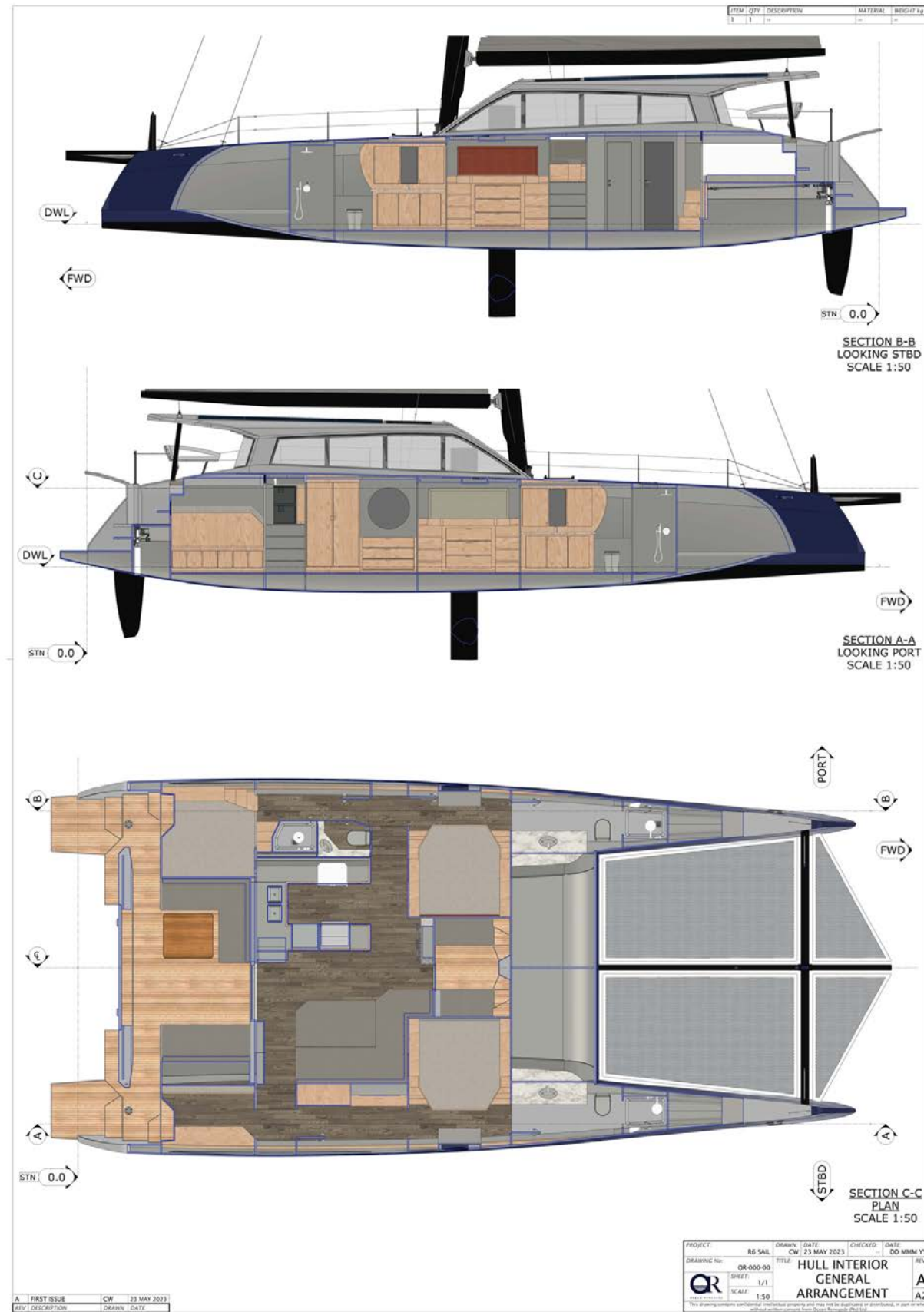
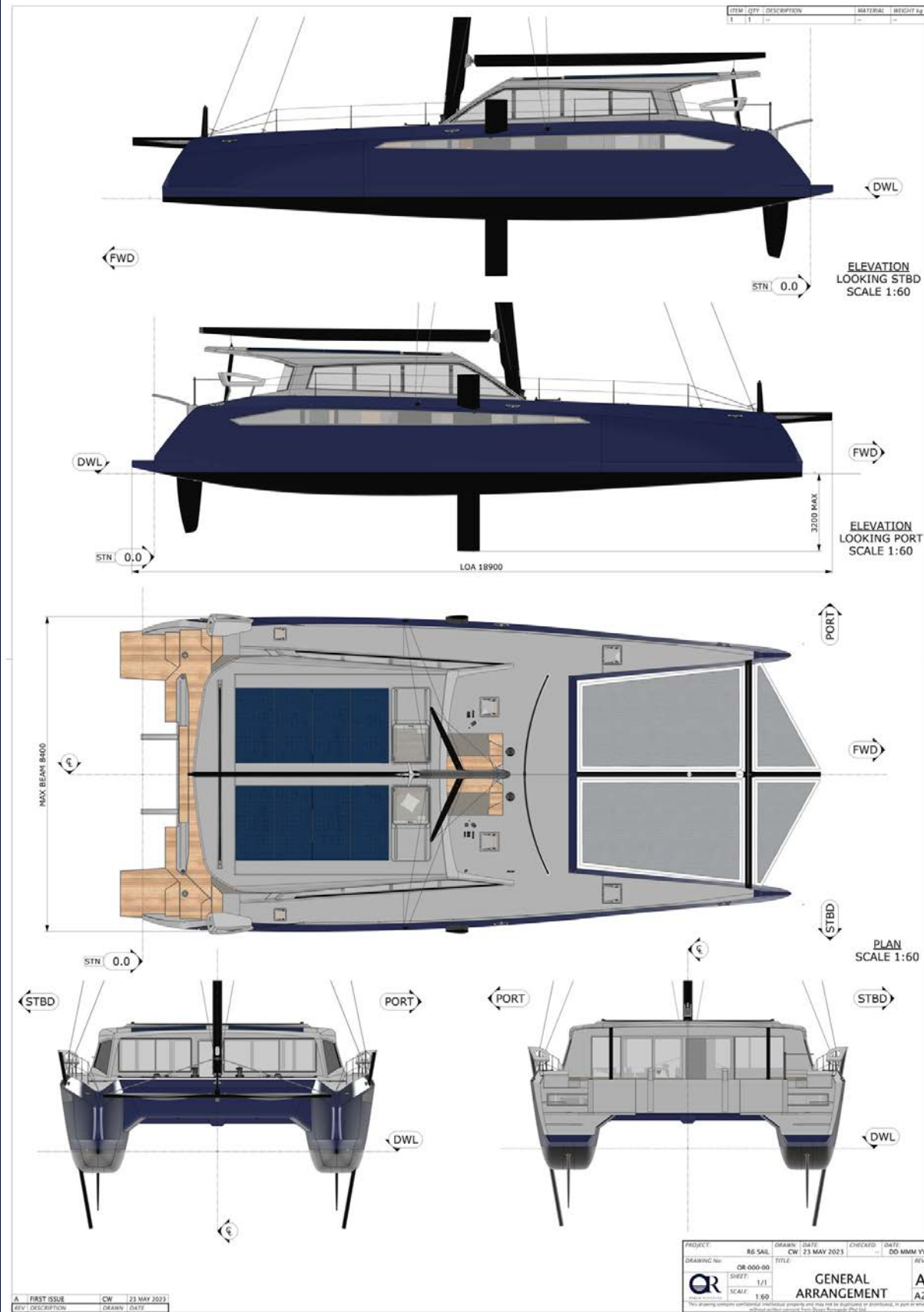
The R6's remarkable performance capabilities make venturing into remote destinations a breeze, as you can do so with absolute confidence and unparalleled comfort. No matter how far off the beaten path you choose to explore, this exceptional vessel guarantees a worry-free and gratifying journey, ensuring that every adventure is filled with remarkable memories.

## FEATURES

Marstrom carbon mast	23.4m	76.7ft	Upgraded hardware including: Antal line driver, deck gear Karver headboard and clutches, Jefa steering and rudder system, Profurl and Karver furlers, Spinlock clutches, Harken winches, Lewmar continuous line winches, Maxwell anchor system Wichard SS hardware Light weight epoxy construction Schenker Digital Watermaker
Boom	Carbon	Carbon	
Longeron	Carbon	Carbon	
Cross Beams	Carbon	Carbon	
Anchor Box	Carbon	Carbon	
Seagull Stricker	Aramid	Aramid	
Shrouds	Aramid	Aramid	
Main - Doyle Stratis CT1100	115sq.m	1238sq.ft	
Jib - Doyle Stratis CT1100	55sq.m	592sq.ft	
Code 0 - Doyle Stratis Cableless technora	150sq.m	1614sq.ft	
S4 spinnaker - Nylite 250 incl sock	170Brsq.	1829sq.ft	
A3 spinnaker - Nylite 150 incl sock	m	2152sq.ft	
Storm Jib - Crosscut Dacron	200sq.m	392.8sq.ft	
Running Rigging	36.5sq.m	Dyneema	



# GENERAL ARRANGEMENT+



# PHILOSOPHY+

---

Before developing a bluewater cruising catamaran we must ask ourselves some important questions first:

What is the perfect cruising multihull actually? Is performance everything? Are huge interior volumes and lots of heavy luxury finishes in small to medium size catamarans worth the seakeeping penalty? Does a simple design mean "not as comfortable"? Does a complex fitout necessarily equal a more enjoyable lifestyle? Does cheap really mean lower cost and does expensive really mean better?

The answer, after all the effort spent looking for it, turns out to be quite simple, but also rather disappointing: It depends...

Designs should be chosen because they suit the requirements of the people who will be using them and every design out there has a group of people who she is perfect for. So grading a yacht very much depends on what your mission is for the yacht, and one needs to be brutally honest about what that is.

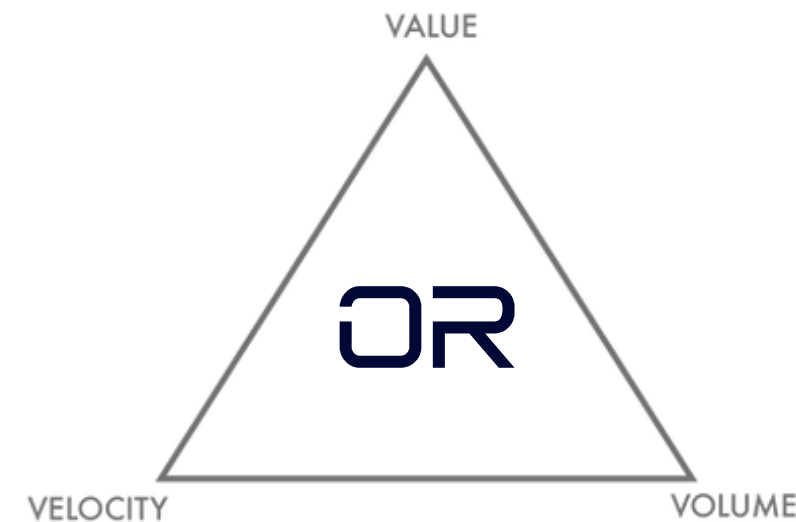
Once this is established, it pays to seek out the craft that gets closest to meeting those requirements with as few compromises as possible. To help with that, we've developed over the years what we call the 'V-ratio'.

Below is a ternary plot of three variables, namely: Value, Volume, and Velocity where value represents what you're getting for your money in terms of design, build materials, build process, and equipment as well resale value in five years of normal use. Value does not mean cheap and a very expensive yacht can also have huge value.

Volume speaks for itself but also encompasses load-carrying ability and how badly a platform is affected by additional loading. Some very quick boats can become very slow boats with just a few extra hundred kilos on board.

Velocity also largely speaks for itself but one has to qualify it with 'ease' of velocity because a big carbon boat might be very quick, but requires a rockstar crew and a large breakage budget. Similarly, a slow heavy boat can be driven hard to the point where it starts making noises best never heard. Using these three criteria, one can plot in the triangle where particular yachts fit and which are in your zone basis the (honest) answers you gave to the questions you asked yourself above

Valhalla is dead centre of the triangle



# SUSTAINABILITY+

As custodians of our fragile blue planet, it's imperative that we all do our small part to ensure we leave as little behind in our wake as possible so that generations to come can be afforded the opportunities we have had. Sustainability is centric to our build processes as we continuously strive to improve on our workflows to optimise and reduce our emissions.



The majority of our power needs is derived from solar generation or stored battery backup. We also make use of products and materials that are ecofriendly, such as the stylish light weight bamboo cabinetry that features on most of our boats.



We also incorporate hybrid electrical propulsion system as standard in all our product offerings. This enables our clients to make the best use of solar, wind and hydrogeneration capabilities, in daily operations, ensuring that our vessels are able to traverse the seven seas as lightly as possible.



Sicomin Epoxy Systems - "SUSTAINABLE MATERIALS WITH UNCOMPROMISING PERFORMANCE Sicomin's GreenPoxy® range, developed and manufactured in France, offers the largest range of next generation bio-based epoxy resin systems on the market today, some produced with up to 51% of bio-carbon content deriving from plant and vegetable origin (ASTM D6866)." ([Sicomin.com](http://Sicomin.com)).



*Sicomin GreenPoxy*

Not only do we look at our processes but those of our suppliers. To this, we support businesses that make a concerted effort to align their values with strong ecofriendly practices. In addition, we make use of recycled products, where available, to further reduce our footprint such as recycled core products in our non-structural surfaces such as cabinetry.