

50 ft 2021 Sunreef 50, LENA  
 US\$2,100,000 Tax: Not Paid  
 Tortola, British Virgin Islands



### Boat Details

Make:	<b>Sunreef</b>	Class:	<b>Catamaran</b>	Cabins:	<b>5</b>
Model:	<b>50</b>	Hull Material:	<b>Fiberglass</b>	Heads:	<b>5</b>
Year:	<b>2021</b>	Drive Type:	<b>Sail Drive</b>	Fuel Type:	<b>Diesel</b>
Length:	<b>50 ft</b>	Beam:	<b>30 ft</b>	Max Draft:	<b>5 ft 10 in</b>
Price:	<b>US\$2,100,000</b>	Boat Location:	<b>Tortola, British Virgin Islands</b>		
Condition:	<b>Used</b>	Name:	<b>LENA</b>		

**Just Catamarans | Just Catamarans, Inc**  
 Harbour Towne Marina, Dania Beach, Florida, United States  
 Tel: (954) 589-2343 Fax: (954) 589-0867  
 sales@justcatamarans.net  
 https://justcatamarans.net/



## Description

Sunreef 50A Galley up (Owner's cabin + 3 Guest cabins + Crew)

The Sunreef 50 is the largest 50-foot catamaran and an all-around sailing yacht ideal for exclusive getaways, charter and transoceanic adventures. Lena has a superior level of comfort onboard, generous teak use, high bulwarks and classy lines underscore her modern style with a classic edge. The boat can be completely controlled and managed with a tablet from the helm or chart table which includes: generator, appliances, blinds, lights, engines, aircon, blackwater pumps, freshwater pumps, alarms, and other items as well - a modern yacht indeed.

Her saloon opens on to both the limitless bow terrace and the yacht's cockpit which is extended with a hydraulic aft platform. The custom layout includes airy, luxurious guest cabins and an opulent master suite 7-closets, vanity, and an immense bathroom.

A custom carbon bimini with 2KW of solar absorption allows the captain to see up the carbon mast to the mainsail while underway and blocks all harmful UV light. The jacuzzi and sunpads are the perfect way to relax in the morning or at night and take in the surrounding area.

The solar array feeds a 50KW lithium battery bank that can run the aircon and almost all the appliances onboard for 24-hours. The generator charges the bank from 20% to 100% in 4.5-hours - truly a modern cruising luxury.

At night relax and enjoy the glimmer of 12-underwater lights that showcase wildlife and compliment the night sky.

Lena currently has a Captain and Chef for an owner operated charter program in the BVIs which is perfect for part time cruisers. The weekly rate for charter is \$32,000-\$50,000. It is the only Sunreef 50 in the Caribbean that is available for charter currently.

Copy this link for additional recent photos.

<https://www.dropbox.com/sh/1y2js5ubfow1lwn/AADmQYnpQkqxLftoQvnUgweha?dl=0>

## Information & Features

### 2021 Yanmar 80 (Engine 1)

Type:	<b>Inboard</b>	Drive Type:	<b>Sail Drive</b>
Fuel Type:	<b>Diesel</b>	Power:	<b>80 hp</b>
Hours:	<b>1875</b>		

### 2021 Yanmar 80 (Engine 2)

Type:	<b>Inboard</b>	Power:	<b>80 hp</b>
Fuel Type:	<b>Diesel</b>		
Hours:	<b>1904</b>		

### Dimensions

LOA:	<b>50 ft</b>	Max Draft:	<b>5 ft 10 in</b>
Beam:	<b>30 ft</b>		
Min Draft:	<b>5 ft 10 in</b>		

## Tanks

Fuel: **2 x 264 gal**  
Fresh Water: **1 x 211 gal**  
Holding: **2 x 45 gal**

## Accommodations

Cabins: **5**  
Heads: **5**

## Other

Hull Shape: **Catamaran**  
Flag Of Registry: **Cayman Islands**

## SAILS

Carbon Mast and Boom-Fully battened mainsail Carbon square top, with electric winches  
-Genoa, Carbon - with electric furling  
-Solent, Carbon - with electric furling  
-Furling Spinnaker, Polyester - with electric furling - 220 sq meters  
-Furling Spinnaker - 180sq meters  
-All winches onboard are electric, with hand and foot controls

## MECHANICAL

-2 complete engines 80hp (Yanmar), with sail drives -EWOL Feathering propellers -2 fuel tanks of 500L each -1 engine speed controls (on the flybridge) -Hydraulic steering system  
-Automatic fire extinguishing system in engine rooms

## DECK GEAR

-Manual gangway -Port lights -2 swim ladders on the skirt and aft platform  
-Electric mooring winches  
-Hatch at the top of the stairway between cockpit and flybridge -Hydraulic platform up to 500kg capacity

## ELECTRICAL SYSTEMS

- AC-230V 50Hz 1PH
- Main switchboard with panel extension {manual change over shore-generators}
- 3x charger (24V/100A), inverter/charger (220V/50Hz/8000W)
- 2x shore power inlet 63A
- 8x socket 230V per cabin, 3 in saloon, 3 in dining area and 4 in galley
- Additional Inverter 120V/60Hz/3000W + 10 sockets
- Additional Inverter 230V/50Hz/3000W
- Generator 19kW, 50Hz, 230V
- DC-24V, main switchboard, from 600Ah to 1000Ah
- House batteries (24V/600Ah)
- 2 starting batteries
- Charger Skylla 3x 24V/100AMPS
- Additional Charger for engine starting batteries, one on each side
- 2 alternators 24V, 75A each

## LIGHTS & GAUGES

- Interior lighting with LED lamps
- Navigation lights with LED lamps
- Underlighting of fixed furniture on flybridge and cockpit
- Cockpit ceiling LED stripe surrounding, white Skirt's LED stripe with spotlights
- Lights in the engine rooms
- Spot lights and LED stripe lights on skirt's steps and sidewalks
- Spot lights on front terrace deck and cockpit
- Underwater lights LED
- Mast LED courtesy lighting

Demotic system for lights, controls, and DIC system, including dimmers for ceiling lights

Digital Pump Management:

Measurement: Tank level monitoring with alarm, fresh water, black water, fuel

- Battery and Victron charger monitoring with alarm: starter/ main batteries bank
- Measurement of temperature in the engine room

## NAVIGATION & ELECTRONICS

B&G equipment

- Compass (size 135mm) Chronometer and barometer
- Wind sensor, Speed/Depth/Temp Sensor, GPS, Zeus Controller
- Upgraded Zeus controller, Triton autopilot, V90S black box VHF AIS RX System
- 2 pcs Zeus 16 basemap
- Search Light
- Fog Horn

## PLUMBING

- Fresh water: 1x BODL equipped with level indicators
- 1 pressurized pump
- 2 water heaters of 80L each
- Black water: 1x 170L, 1 deck filler outlet acc. To ISO8099
- 4 electrical bilge pumps
- 2 manual bilge pumps Hand shower on deck
- 1 pressurized fresh water outlet on cockpit
- Electric toilets 24V in bathrooms with fresh water flush -Watermaker 220l/h - 230V
- Sea water pump for washing the deck with 2 pressurized fresh water outlets on cockpit and front terrace

## COMFORT ON BOARD

- Electric Blinds
- Battery Powered Airconditioning 70,000 BTU
- LED TV 32" with installation (price per cabin)
- Kitchen Island in saloon
- Galley appliances package (dishwasher 9 sets dishes, cooker hood, electric oven with microwave function, induction stove)
- Refrigerator/Freezer 221L (220V)
- Washing machine with dryer
- Flybridge cushions set+ flybridge mattress (15pcs of decorative pillows)
- Cockpit mattress (8pcs of decorative pillows)
- Cockpit bar module
- Sink with retractable fit for the bar Ice maker for the bar
- Low fridge for the bar
- 4 Electric Stainless Steel BBQ
- Electric diving compressor 100l/min, 90-330 bar

## INTERIOR/EXTERIOR DESIGN

- Furniture and all interior panels made of individually selected wood
- All upholstery and cushions made of synthetic fabric
- Hull and deck Burgundy Paint
- Black aluminum sliding entrance door
- Bathroom walls finished in glossy gelcoat
- Anti-skid on the deck
- Front terrace and skirt s floor covered with teak -Deck covered with teak and installed flush hatches-Flybridge covered with teak

## MOORING & TOOLS

- ULTRA Anchor - 110lbs
- Standard 80m chain (diameter 13mm DIN)
- Windass, DYLAN 2000W
- Additional anchor 20kg + 20m galvanized chain (diameter)
- Mooring kit (16 fenders+ 15mooring ropes)-Shroud cutter

## SAFETY EQUIPMENT

Complete rescue equipment with life raft for 12 persons

## Additional Units Included

- 2021 Highfield Sport 390

## Disclaimer

The Company offers the details of this vessel in good faith but cannot guarantee or warrant the accuracy of this information nor warrant the condition of the vessel. A buyer should instruct his agents, or his surveyors, to investigate such details as the buyer desires validated. This vessel is offered subject to prior sale, price change, or withdrawal without notice.













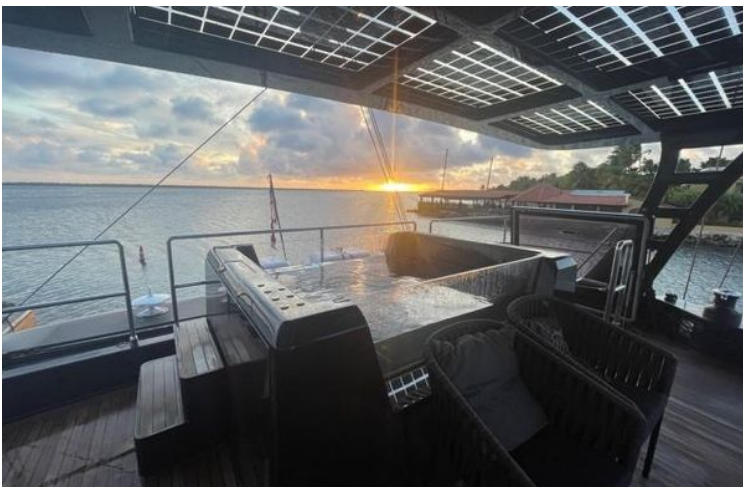












## LAYOUTS



