

80 ft 2023 Mystique Yachts Silhouette, SKYE

**US\$4,249,000 Tax: Paid**

Fort Lauderdale, Florida, United States



**JUST  
CATAMARANS**



## Boat Details

Make:	<b>Mystique Yachts</b>	Class:	<b>Catamaran</b>	Guest Cabins:	<b>5</b>
Model:	<b>Silhouette</b>	Hull Material:	<b>Fiberglass</b>	Guest Heads:	<b>7</b>
Year:	<b>2023</b>	Drive Type:	<b>Direct Drive</b>	Fuel Type:	<b>Diesel</b>
Length:	<b>80 ft</b>	Beam:	<b>36 ft</b>	Max Speed:	<b>17 kn</b>
Price:	<b>US\$4,249,000</b>	Boat Location:	<b>Fort Lauderdale, Florida, United States</b>	Max Draft:	<b>5 ft 8 in</b>
Condition:	<b>Used</b>	Name:	<b>SKYE</b>		

**Just Catamarans | Just Catamarans**

Harbour Towne Marina, Dania Beach, Florida, United States

Tel: (954) 589-2343 Fax: (954) 589-0867

[sales@justcatamarans.net](mailto:sales@justcatamarans.net)

<https://justcatamarans.net/>



## Description

**SKYE**, a 2023 Mystique Silhouette 800, presents the kind of opportunity that rarely hits the market: a luxury five-stateroom performance-oriented sailing catamaran built for the demands of high-end yacht charter and passage-making, yet never chartered herself. Designed and built by renowned South African builder Mystique Yachts, **SKYE** blends robust offshore capability with innovative and functional design that feels more like you're in a luxury penthouse suite than a sailing catamaran. Her five-stateroom ensuite layout and dedicated captain + crew quarters, make **SKYE** a dream setup for both a premium crewed charter program or a private owner who values personal space with the flexibility to host family and guests with ease.

**SKYE's** sprawling salon merges seamlessly with her massive aft cockpit, offering options for both indoor and al fresco dining and entertainment spaces. Her oversized flybridge with easy access from both the cockpit and foredeck, invites guests to relax in elevated comfort while at anchor or underway. Under sail, she is responsive and smooth, a true performer for long passages and Caribbean island hopping alike. Whether you're an investor looking to offer five-star luxury charter experiences, or a private family dreaming of a flagship for your own adventures, **SKYE** offers a rare combination of business potential, personal indulgence, or both.

Below are just a few of **SKYE's** most notable features:

- **U.S. importation duty/tariffs paid**
- 5 dual-occupancy staterooms + crew quarters for 5
- 1,000Ah of lithium on a 24v system
- Fully equipped with galleyware, linens, and essentials - ready to cruise day one!

**SKYE** is conveniently located less than 30 minutes from both Ft. Lauderdale and Miami International Airports, and is available for showings by appointment.

See below for additional details...

### **GALLEY**

- Elba full size oven model ELIO 934
- Elba 5-burner gas stove model ELIO 95-545
- Falco extractor hood model AR-90-501
- Siemens 346-liter refrigerator model Inox KS36VVI30Z (x2)
- Siemens 237-liter freezer model Inox GS36NVI30Z
- Siemens full size 12-setting dishwasher
- Scotsman ice maker model EC46
- SnoMaster under-counter beverage cooler (x2) in cockpit + flybridge model SM-100
- LG microwave oven model MH8265DIS
- Franke Fraganite (natural granite) double-sink in the galley
- Weber portable gas grill model Q3000

### **COMFORT & ENTERTAINMENT**

- Owner's Ensuite Stateroom: King bed + walk-in closet + private head
- Guest Ensuite Staterooms (x4): Queen beds + private heads
- Captain's Quarters: Queen bed + private head
- Crew Quarters: Queen bed + Single bed + private head

- Samsung 40' TV model UA40N5300AKXXA in main cabin w/soundbar
- Samsung 55 inch TV model UA55RU7100KXXA in salon w/soundbar
- **NEW (2025)** Fusion Apollo marine stereo model MS-AP770
- Fusion 10 inch subwoofer on flybridge model MS-SW10
- **NEW (2025)** Fusion 4 channel marine amplifier model MS-AM504
- Fusion True Marine 7 inch 260W speakers throughout cockpit, foredeck, and flybridge
- Supertramp PVC coated trampoline net (x2)
- Built-in cockpit table (dining up to 10 guests)
- Hard bimini over the flybridge helm station + clear spray hood
- Targa rail + soft awning over flybridge lounge
- Teak slatted folding chairs (x6)
- Flybridge lounge chairs (x2)
- Swim ladder (x2)

## **ELECTRONICS, NAVIGATION & COMMUNICATIONS**

- Raymarine Evolution P70s autopilot control
- Raymarine EV1 autopilot sensor core
- Raymarine ACU400 actuator control unit
- Raymarine i70s multifunction color display
- Raymarine i70 multifunction display
- Raymarine iTC-5 instrument transducer converter
- Raymarine ST60 wind transducer
- Raymarine DST800 thru-hull transducer
- Raymarine DST810 Gen 2 thru-hull smart transducer
- Raymarine FLIR M232 thermal camera
- Raymarine Quantum 2 Q24D doppler radar
- **NEW (2025)** Raymarine Axiom Pro 16 RVX display
- **NEW (2025)** Raymarine Axiom XL16 multifunction display
- Raymarine RMK-10 remote keypad
- Raymarine Axiom XL accesory pack
- **NEW (2025)** Raymarine Seataalk HS5 network switch
- Raymarine RAY53 marine VHF radio
- Raymarine GA150 GPS receiver
- Raymarine ECI-100 engine interface
- **NEW (2025)** EchoPilot 5" transducer model FLS3D (x2)
- **NEW (2025)** Echopilot transducer interface box model FLS3D
- **NEW (2025)** Echopilot Visual processor model FLS3D
- **NEW (2025)** Volvo Glass Cockpit 7 inch engine instrument panel model MFD7607
- Volvo control unit model 21092158P04 (x2)
- Carbon Nautica carbon fiber helm wheel

- Plastimo Offshore 135 compass at the helm
- Volvo EVC single lever throttle control system
- Aqualuma 12 series underwater light (x2)
- Lofrans chain counter model IRIS 103
- Jefa autopilot rotary drive model DU-WS300-24
- Starlink satellite internet system
- Trumpet horn

## **ELECTRICAL & POWER SYSTEM**

- 1000Ah Victron LifePO4 (lithium iron phosphate) smart batteries (5x 200Ah)
- Victron color control battery monitor
- **NEW (2025)** Victron Smart BatteryProtect 12/24V-220A
- Victron Skylla TG 3-Phase Battery Charger
- Victron Energy MultiPlus 5000W 24V Inverter/120V charger
- Victron Lynx Distributor 1000 (x2)
- **NEW (2025)** Victron Lynx Smart BMS 1000
- Victron Lynx shunt
- Victron galvanic isolator model VDI-64A
- Victron Cyrix 230A 12/24v battery combiner
- Victron Phoenix inverter
- Victron Orion DC/DC converter 24/12 80DC
- 500 amp remote battery switch
- Cummins Onan 19kW generator (x2) model 19MDKDV-8242A
  - Port: 1,109 hrs.
  - Starboard: 512 hrs.
- Onan generator remote start panel (x2)
- Promariner Prosafe FS60 Failsafe 60amp Galvanic Isolator
- Marinco 50A 125/250V Easy Lock shore power inlet
- Deltec 12V 95Ah AGM start battery (x2)
- Blue Sea AC/DC electrical distribution board
- Hobut 3-phase multipower meter
- 98 ft. (30m) shore power cable
- 220V + USB + USBC (2x per stateroom)

## **MECHANICAL, PLUMBING & OTHER APPLIANCES**

- Aqua Air Chiller 60,000 BTU unit model AT5HGE-547 (x2)
- Cabin air handlers and remote controls in each stateroom + salon
- **NEW (2025)** Aqua Air touchscreen control panel model A10P211VHCEB
- Aqua Air whisper fan coil 24000BTU unit model WCW-24C (x3)
- Racor fuel/water separator model R12P for port generator
- Racor fuel/water separator model R20P for starboard generator

- Racor diesel fuel/water separator model 500FG (x2)
- Sea Recovery Aqua Matic Watermaker (1800 gallons/6814 liters per day) model 1400-2 w/remote panel
- Sea Recovery commercial prefilter
- Sea Recovery oil/water separator
- Commercial Speed Queen stacked washer/dryer (11kg) model NT3JASP403UW01
- Wema water gauge model 110210 (x2)
- Wema fuel gauge model 110320 (x2)
- Quick Nautic Boiler 80L model B38012S
- DAB Booster Silent pump model DABB00SIL4M
- Johnson Viking Power 32 waste pump model 10-23373-04 (x2)
- Zenit black water pump model DGO 50/2/G50V (x2)
- Jabsco Quiet Flush electric toilet model 370454094 (x2)
- Headhunter Royal Flush hydro toilet model HVE-0CS-B1 (x6)
- Amtrol Therm-X-Trol accumulator tank model ST-12 (x2)
- Quick 21 gallon/80 liter water heater (x2)
- Cobra deck shower (hot/cold) at transom (x2)
- Freshwater hose system anchor locker
- Universal 8 inch extractor fan (x2)

## **ENGINES, PROPULSION & STEERING SYSTEM**

- Volvo D3-200 diesel engine (x2) w/glass cockpit instrument panel
- ZF 63A hydraulic drive transmission (x2)
- Sigma Drive model SD225 (x2)
- Quick 10kW Bow Thruster model BTR 240
- Bruntons Varifold 4 blade 25 inch x 20 inch propeller (x2)
- Whitlock chain and cable steering system
- Rudders interlinked and connected to wheel and aluminum steering quadrants w/stainless steel chain and cable

## **SAILS & ON-DECK**

- Full-batten Ullman Endurance crosscut mainsail 1,296 ft<sup>2</sup> (179 m<sup>2</sup>) w/carbon fiber canoe boom
- Ullman Endurance crosscut jib 1,087 ft<sup>2</sup> (101 m<sup>2</sup>) on an electric furler w/UV covers on leech and foot
- Ullman Blue Line radial code zero 2,906 ft<sup>2</sup> (270 m<sup>2</sup>) w/UV covers on leech and foot
- Profurl electric furler model C600
- Profurl continuous line furler model NEX12.0
- Antal 2-speed self-tailing electric winch model ST XT52 (x3)
- Antal 2-speed self-tailing electric winch model XT62
- Antal 2-speed electric winch model XT52
- Antal running rigging block system
- Antal V-grip clutch (x10)
- Antal Double V-grip clutch
- Antal Maxi 47 track

- Carbon fiber mast (105 ft. AWL)
- Aramid cap shrouds
- Meridian Systems Deash 60 hydraulic boom vang
- Stainless steel lifelines 710mm polished stainless stanchions
- Anodized aluminum toe rails
- Awlgrip painted aluminum crossbeam, dolphin striker, compression post, and code zero prodder
- Stainless steel 330mm mooring cleats (x10)

## **GROUND TACKLE**

- Lofrans 2300W electric windlass model X4
- Lofrans windlass foot switch for windlass (x2)
- Lofrans chain counter at the helm
- 140 lbs. (60kg) primary Delta anchor w/328 ft (100m) of 13mm chain
- 88 lbs. (40kg) secondary Delta anchor w/33 ft (10m) of 13mm chain + 328 ft (100m) nylon rode
- Osculati stainless steel anchor swivel
- Bridle w/chain hook, stainless steel ringers, and thimbles
- 20mm mooring lines (x6)

## **TENDER** (not titled)

- Gemini Waverider rigid inflatable tender model 505
- Yamaha FL100LB 100HP four-stroke outboard
- Electric tender lift platform w/**NEW (2025)** Quick handheld remote control model HRC1002

## **SAFETY, REGULATORY & MISCELLANEOUS**

- Fireboy automatic fixed fire extinguishing system model MA2-275-227-8 (x2)
- Safe Quip fire extinguishers (x12)
- Vetus gas/carbon dioxide detector
- Optical smoke & CO2 detector (x14)
- Viking RescYou life raft model 8UKL (x2)
- Lifebuoy ring w/MOB light
- Life preserver throw ring (x2)
- Lalizas adult life jacket (x10)
- Lalizas child life jacket (x4)
- Lalizas safety harness w/D-ring (x6)
- Sigma auto inflatable lifejacket model 170N (x4)
- Ocean Signal rescueME model EPIRB1
- Orange smoke flare (x2)
- Red para flare (x4)
- Red handheld flare (x6)
- Waterproof grab bag with thermal blankets (x12), emergency nav lights, fog horn, air horn, VHF aerial, and more
- Harken deluxe Bosun's chair
- First aid kit

- Fire Blanket
- NUC lights
- Truck PAC 12/24V portable jump starter model ES1224
- All additional onboard safety equipment conveys with the vessel

### CONSTRUCTION NOTES

- Epoxy resin construction to ISO 9002
- Hull/Decks/floors/bulkheads core: Thermo formed rigid closed cell PVC
- Bridge deck core: Polyethylene honeycomb and resin infused for planeness
- Other high stress areas core: Marine plywood
- Laminated glass windows w/fused black ceramic band to protect sealant from UV damage
- Custom exterior stainless steel fitting w/mirror polish
- Interior furnishings are made with cruelty-free, synthetic materials - no animal-derived products such as real leather or fur have been used

### Information & Features

#### 2019 Volvo Penta D3-200 (Engine 1)

Engine Type:	Inboard	Power:	200 hp
Fuel Type:	Diesel		
Drive Type:	Direct Drive		

#### 2019 Volvo Penta D3-200 (Engine 2)

Engine Type:	Inboard
Fuel Type:	Diesel
Power:	200 hp

#### Dimensions

LOA:	78 ft 9 in	Min Draft:	5 ft 8 in
Beam:	36 ft	Max Draft:	5 ft 8 in
Max Bridge Clearance:	105 ft		

#### Weights

Displacement:	99,208 lb
---------------	-----------

#### Speed

Cruising Speed:	10 kn
Max Speed:	17 kn

#### Tanks

Fuel:	2 x 277 gal
Fresh Water:	2 x 462 gal
Holding:	7 x 143 gal

## Accommodations

Guest Cabins: **5**

Guest Heads: **7**

## Other

Hull Shape: **Catamaran**

Flag Of Registry: **British Virgin Islands**

Designer: **Peter Wehrley**

## About the Builder

Mystique Yachts is a premier boat builder based in Cape Town, South Africa, specializing in the design and construction of luxury sailing catamarans like the Silhouette 800 and the fully carbon Matrix 60 performance catamaran. While the brands Mystique Yachts and Matrix Yachts sometimes appear interchangeably in the marketplace, both are designed, built, and founded by the same expert shipyard team and share a unified commitment to performance, innovation, and offshore capability.

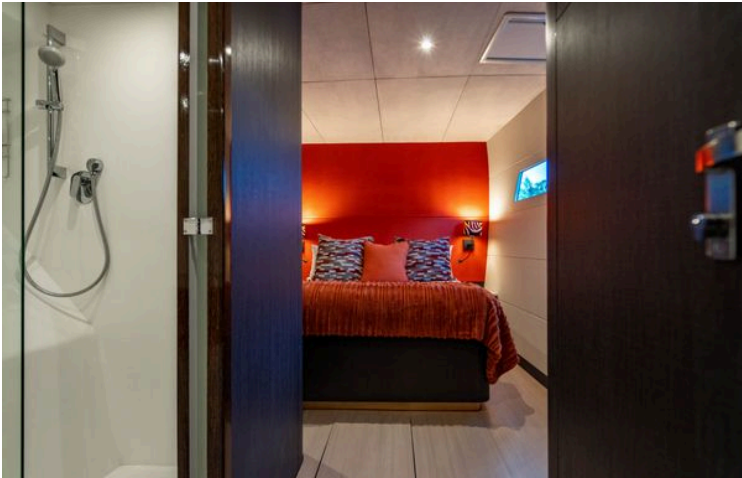
Founded in 2001, Matrix Yachts has earned global recognition for producing high-quality, semi-custom catamarans that blend long-range cruising performance with five-star comfort. The company rose to prominence under the Matrix and Mystique brand names with standout models such as the Vision 450, Mirage 760, Explorer 760, and the highly acclaimed Matrix Silhouette 760, a flagship charter yacht that operates across the Caribbean and Mediterranean.

Today, Mystique Yachts (est. 2017) continues to evolve its legacy, delivering bespoke multihulls under both the Mystique and Matrix model lines.

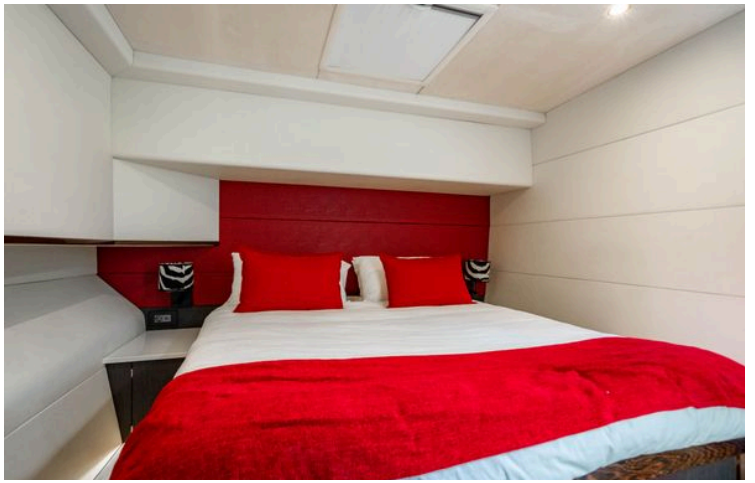
## Disclaimer

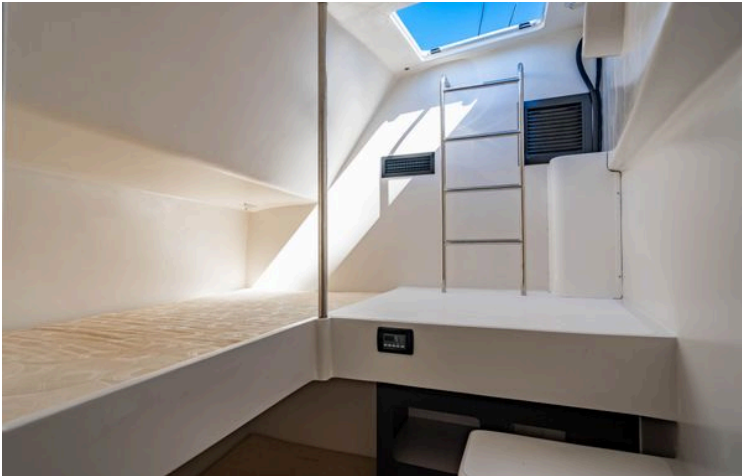
The Company offers the details of this vessel in good faith but cannot guarantee or warrant the accuracy of this information nor warrant the condition of the vessel. A buyer should instruct his agents, or his surveyors, to investigate such details as the buyer desires validated. This vessel is offered subject to prior sale, price change, or withdrawal without notice.













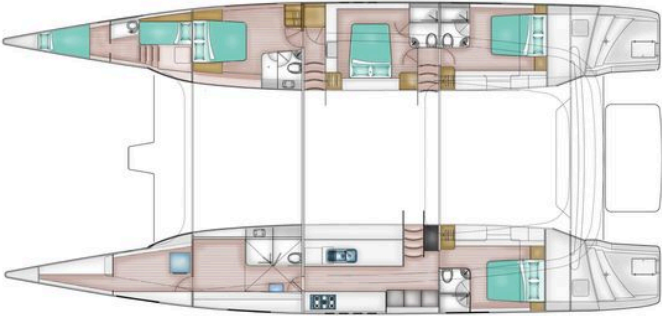
Silhouette 800



Floor Plan



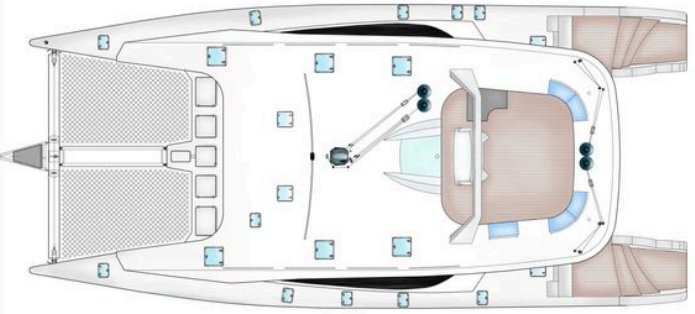
Silhouette 800



Below Decks



Silhouette 800



Deck Plan

